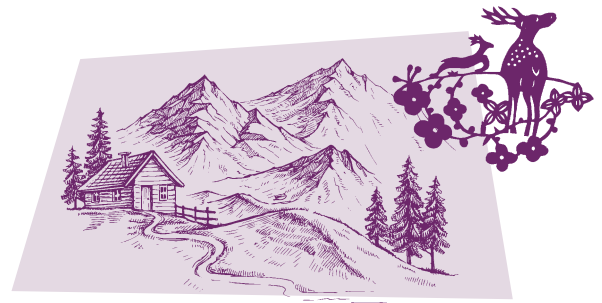


# Pick-up Notes (or Upbeats)

This piece begins on *beat 3* with a **pick-up note**.  
Pick-up note(s) lead into the first full measure.

If a piece begins with a pick-up, the last measure is often incomplete. The combined beats of the incomplete first and last measures will equal one full measure.



# Home on the Range

American Folk Song  
arranged

**Moderately**

*mf* Oh, give me a home where the buf - fa - lo roam, where the

4 on \_\_\_?      4      1      1/3

5

deer and the an - te - lope play;      Where

9

sel - dom is heard a dis - cour - ag - ing word, and the

**Teacher Duet:** (Student plays 1 octave higher)

R.H.

L.H. *mp with pedal*

9      13

13

skies are not cloud - y all day. Home!

*f*

5

3 4 4 1

18

Home on the range! Where the deer and the an - te - lope

4 3 2

3 4 5

23

play; Where sel - dom is heard a dis - cour - ag - ing

28

word, and the skies are not cloud - y all day. L.H. over

2

DISCOVERY



How many phrases are in this piece? \_\_\_\_

*mf*

18 23 28 32

5

2

2