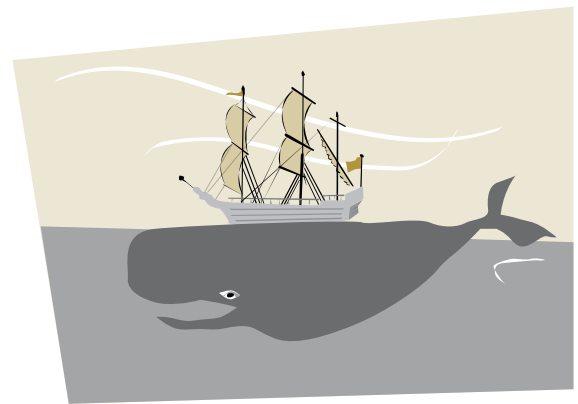
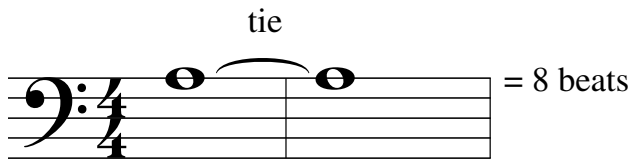


The Tie

A **tie** is a curved line connecting two notes on the same line or space. It means the note will be played *once*, but held for the length of both notes combined.



Sailor's Tall Tale

Lively 3 on ___?
1 on ___?

Count: 1 - 2 - 3 - 4

mf

2 on ___? 1

5 4
2

Teacher Duet: (Student plays 1 octave higher)

R.H.

L.H. *mp*

5

9

13

g r o w l o u d e r **f**

1 A
5

Low A (See p. 15)



Identify each curved line in this piece as a **slur** or a **tie**.

9

4 2 4 3 5 1
cresc.

13

4 4 3 1 3 4
mf A
5