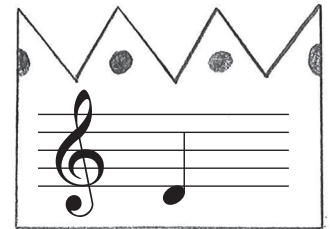
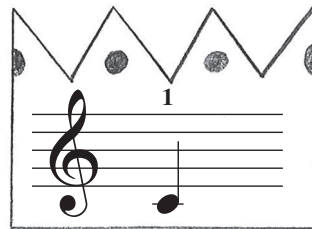
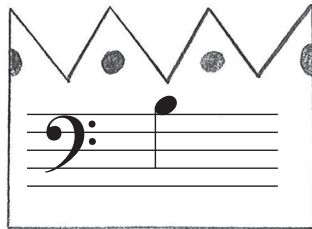
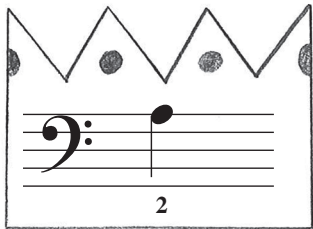


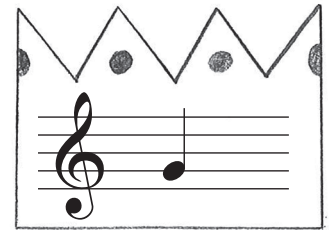
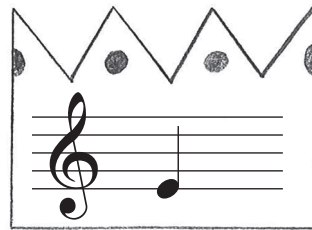
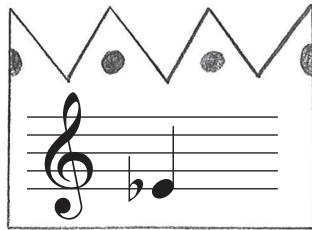
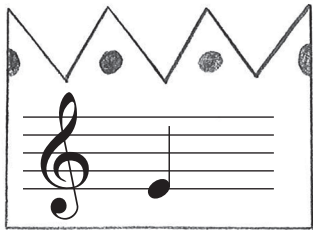


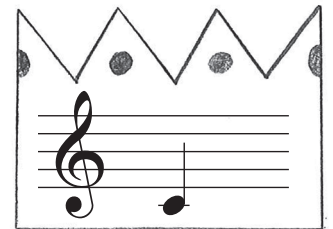
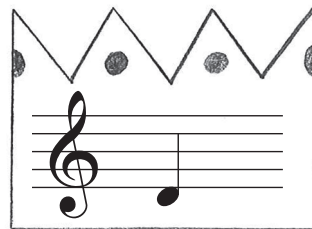
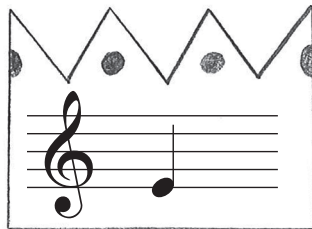
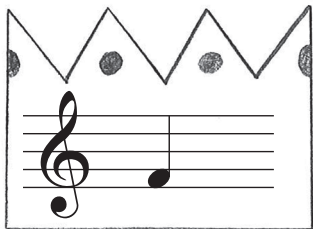
Kingly Notes

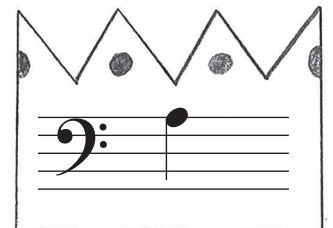
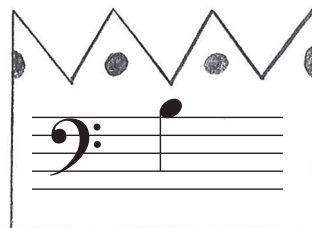
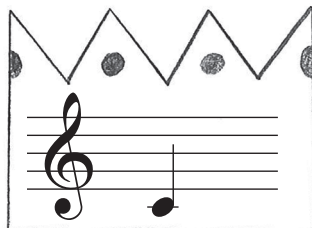
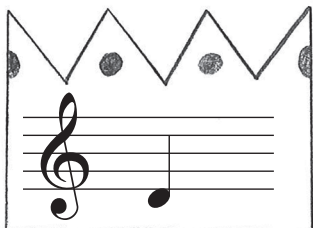
- Name the note for each crown below.
- Then play the kingly melody forward and backward!



Ex. 



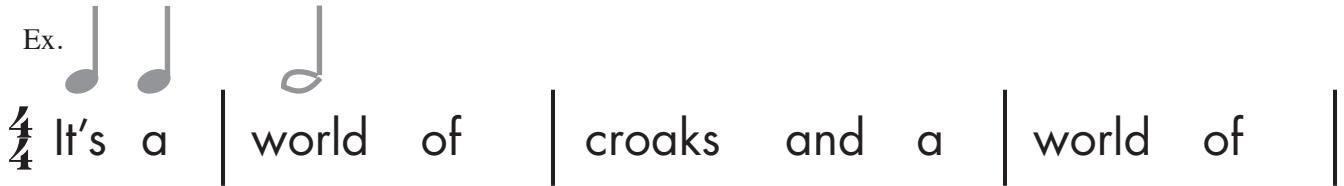




It's a Frog's World

- Using page 4 in the book, can you write the rhythm for measures 1-15 above the words?
- Can you and your teacher sing the melody using these funny lyrics?

Ex.



4

glumps; It's a | world of | hopes and a | world of |

8

stumps. It's a | world full of | rib - bits, a | world full of |

12

jumps. It's a | frog, frog, | frog, frog, | world. |

Ribbit!



Bugler's Fanfare

- Draw barlines to match the time signature for this bugler rhythm.
- Draw a double barline at the end.



$\frac{4}{4}$ ○



La Bamba Beats

- Add the beats in each guitar.

Ex. 1
beat

beats

beats

beats

beats

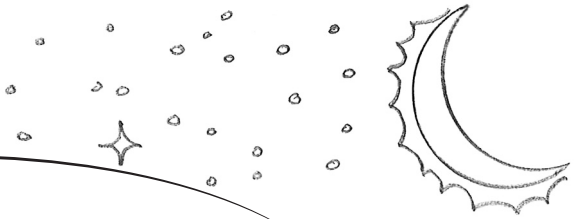
beats

beats

beats

The Owl's Lullaby

- Sightread this owl lullaby s-l-o-w-l-y.
Does it sound like a mysterious melody under the moonlight?



Rather slowly

1

6

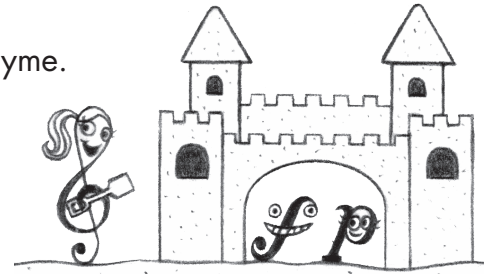
10

14

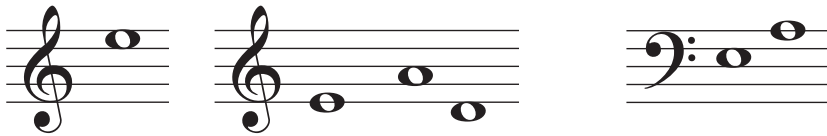


The Mermaid's Story Rhyme

• Name the notes to complete the Story Rhyme.



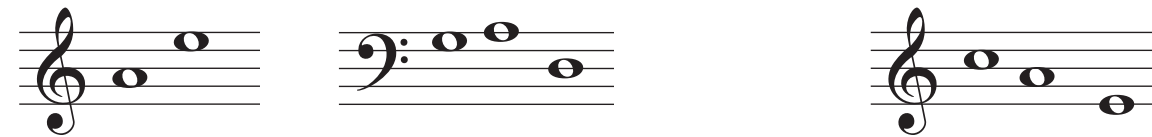
Lyrics by Crystal Bowman



Little m_r_m_i_ in the s_ _ , won't you



om and pl_y with me? We can ri_ _



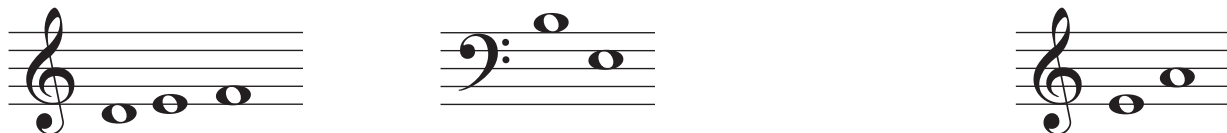
the w_v_s so _r_n_ and make _ _stl_s



in the s_n_. Wh_t do m_r_m_i_s



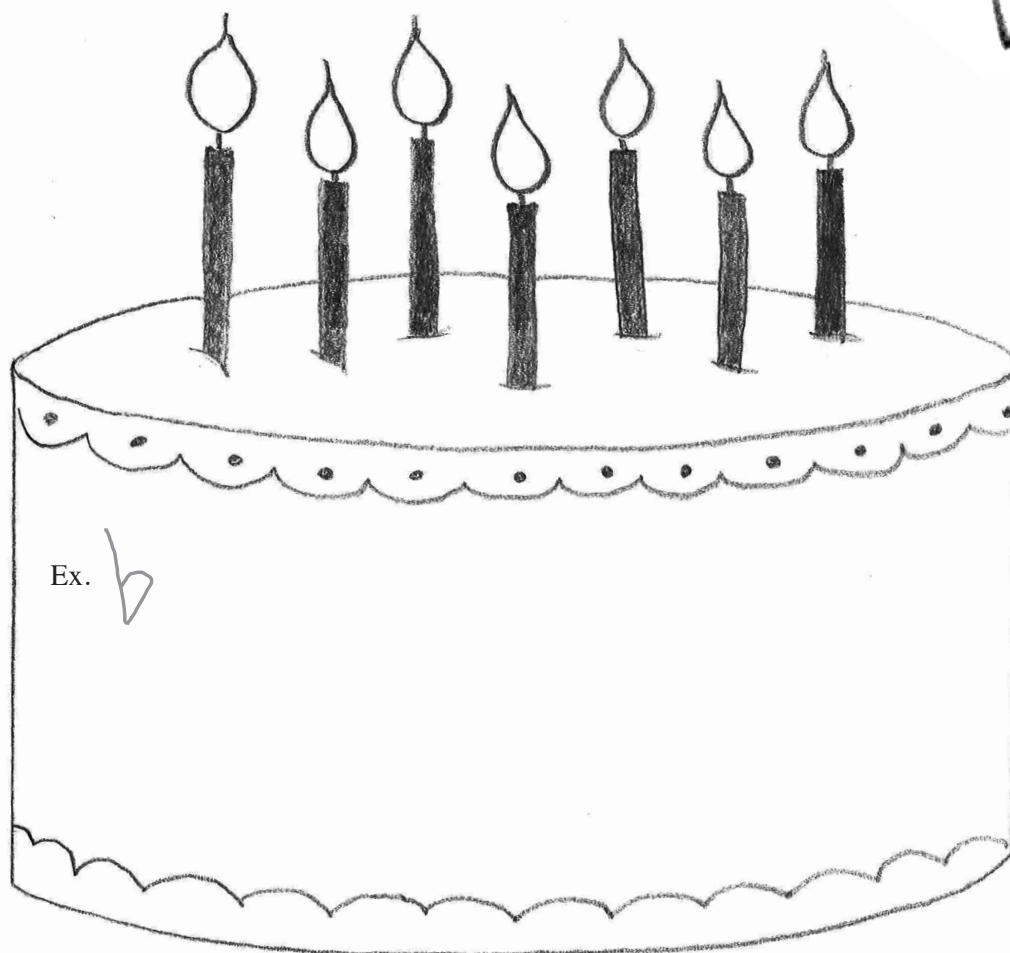
like to _ _t? You have _ins instead of _ _ _t.



How _ _li_ htful it would _ _ to be a mermaid in the s_ _.

A Musical Birthday Cake

- Decorate the cake by drawing musical symbols you know. The list of musical words at the right may give you ideas.



Words

slur
treble clef
bass clef
time signature
forte
mezzo forte
piano
repeat sign
fermata
quarter note(s)
half note(s)
eighth note(s)
flat
quarter rest
whole rest
chord
crescendo
diminuendo
pedal mark

Rainbow in the Clouds

- Draw a connecting line to the clouds that match.

Ex.

moderately soft

octave

interval of a 4th

mf

moderately loud

interval of a 3rd

2 beats

mp

8 notes

Nanny Says



- Do what Nanny tells you to do for each example below.

Nanny says:

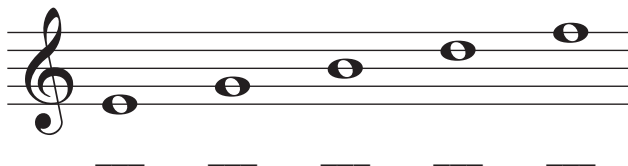
1. Write the time signature.



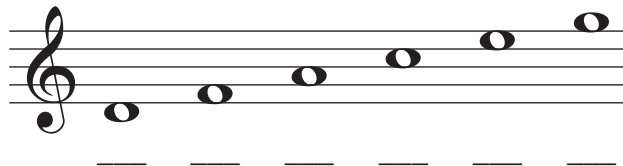
2. Write 1 2 3 4 under the beats.



3. Name the treble clef line notes below.



4. Name the treble clef space notes below.



5. Name the bass clef line notes below.



6. Name the bass clef space notes below.

