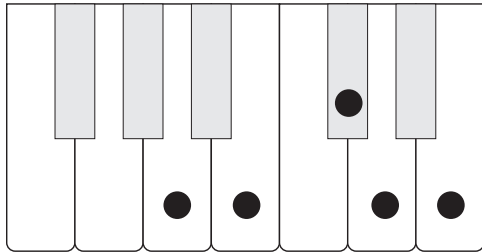


# Major 5-Finger Scales: Identifying Keyboard Diagrams

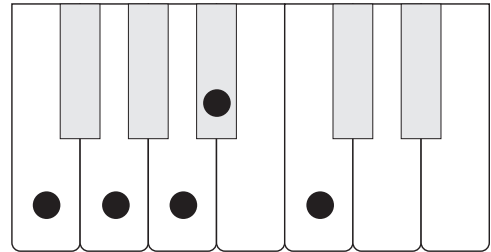
- Name each major 5-finger scale on the keyboard given.
- Write the letter names below. Include any # or ♭.

\_\_\_ Major



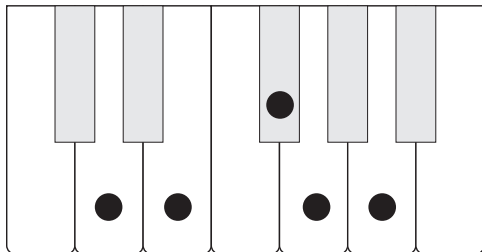
— — — — —

\_\_\_ Major



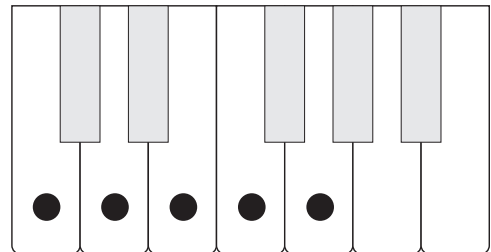
— — — — —

\_\_\_ Major



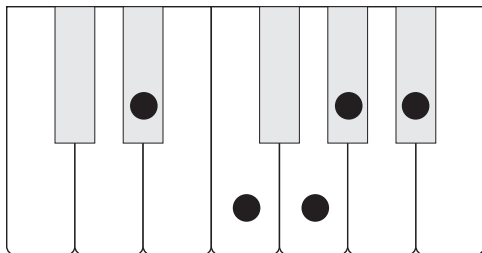
— — — — —

\_\_\_ Major



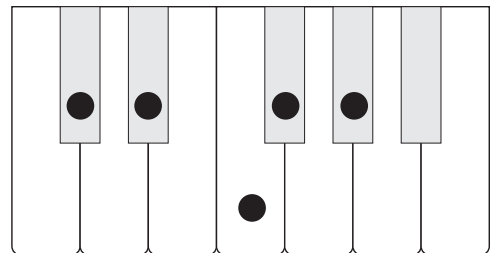
— — — — —

\_\_\_ Major



— — — — —

\_\_\_ Major

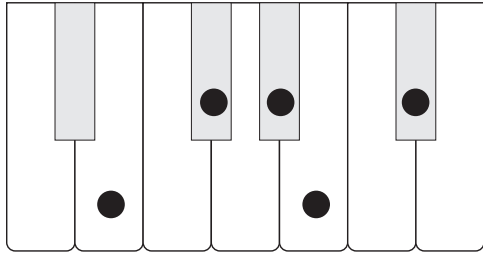


— — — — —

# PIANO ADVENTURES® – SCALE AND CHORD BOOK 1

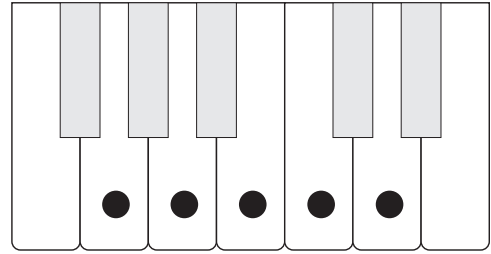
## (Major 5-Finger Scales: Identifying Keyboard Diagrams)

\_\_\_ Major



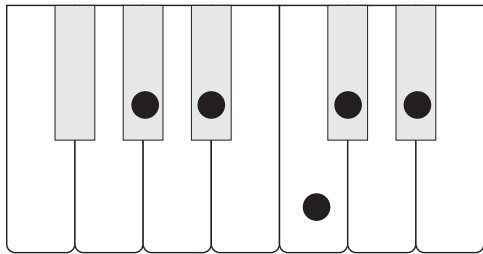
— — — — —

\_\_\_ Major



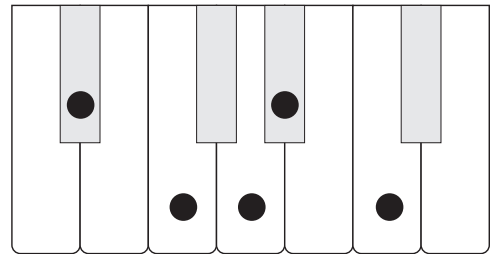
— — — — —

\_\_\_ Major



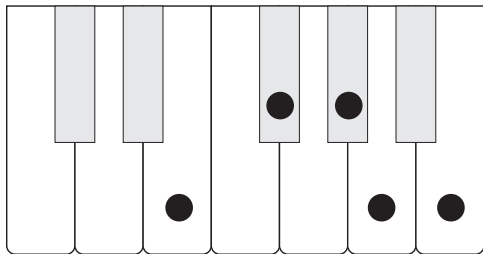
— — — — —

\_\_\_ Major



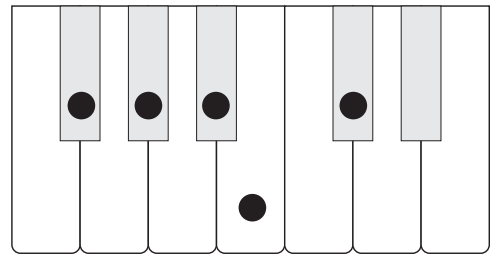
— — — — —

\_\_\_ Major



— — — — —

\_\_\_ Major or \_\_\_ Major



— — — — —

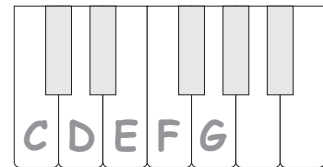
or

— — — — —

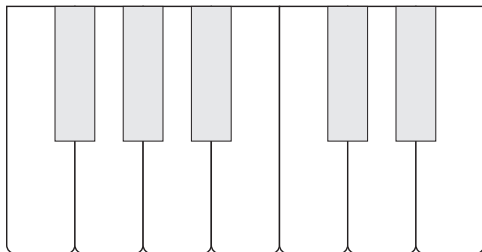
# Major 5-Finger Scales: Labeling Keyboard Diagrams

- Write the letter names on the keyboard for each 5-finger scale.

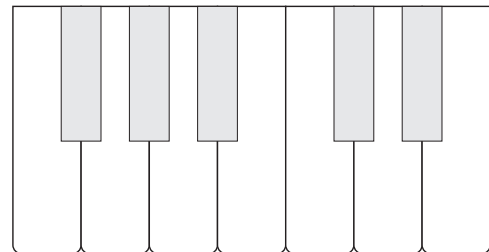
Ex. C Major



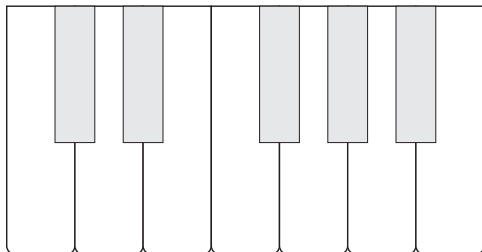
**G Major**



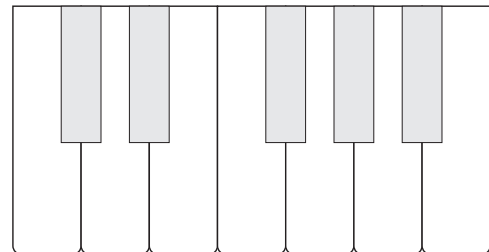
**A Major**



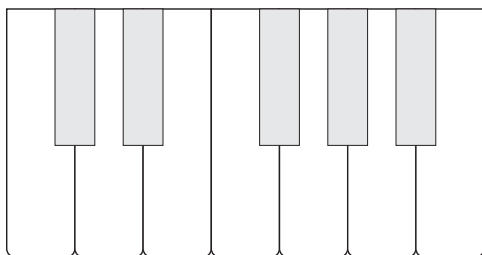
**D Major**



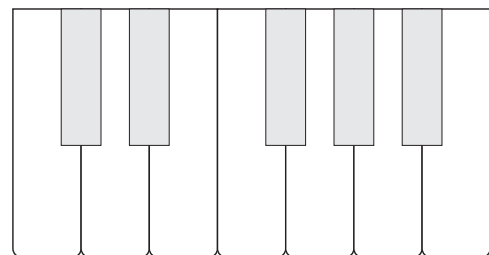
**C Major**



**D<sup>b</sup> Major**



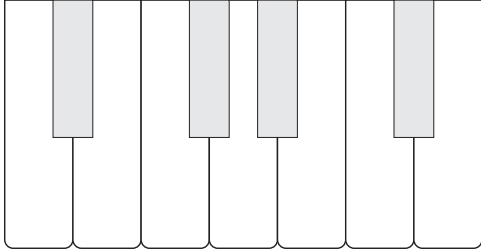
**E<sup>b</sup> Major**



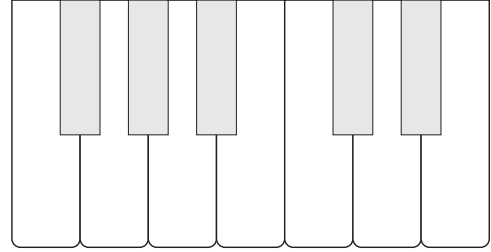
# PIANO ADVENTURES® – SCALE AND CHORD BOOK 1

(Major 5-Finger Scales: Labeling Keyboard Diagrams)

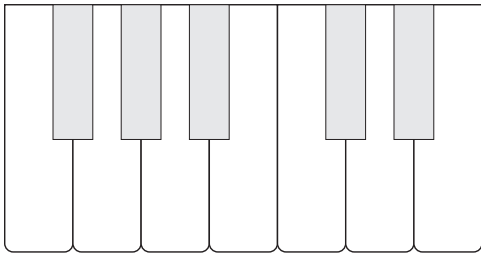
**B Major**



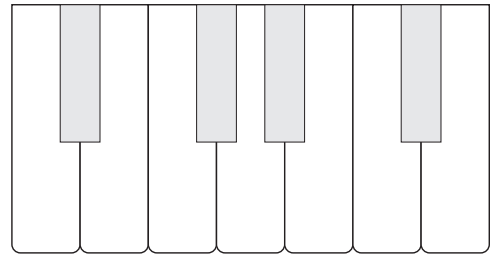
**F Major**



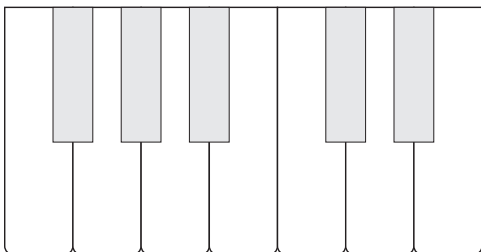
**A<sup>b</sup> Major**



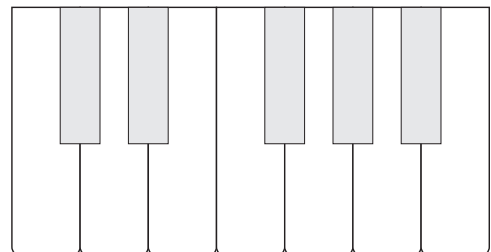
**B<sup>b</sup> Major**



**F# Major**



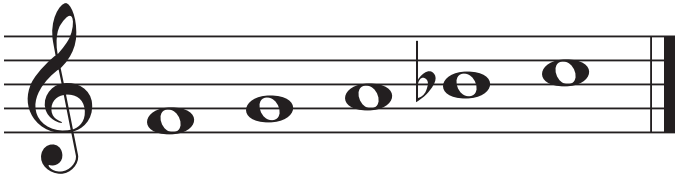
**E Major**



# Major 5-Finger Scales: Identifying on the Treble Staff

- Name the 5-finger scale shown on each staff.
- Write the letter names in the blanks. Include any # or ♭.

\_\_\_ Major



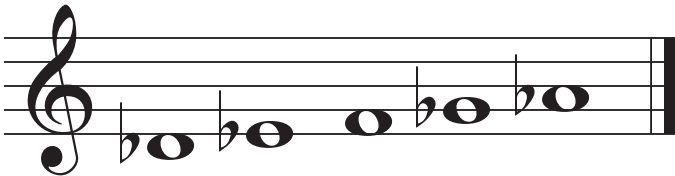
\_\_\_\_\_

\_\_\_ Major



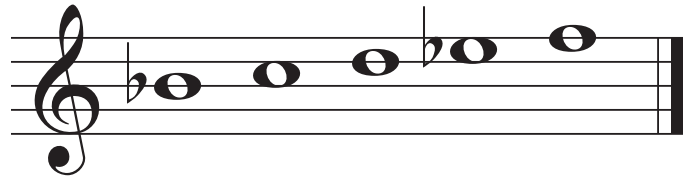
\_\_\_\_\_

\_\_\_ Major



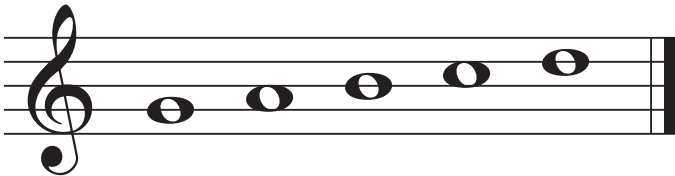
\_\_\_\_\_

\_\_\_ Major



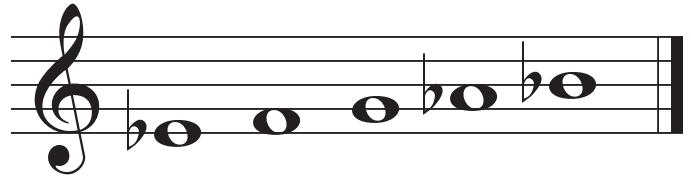
\_\_\_\_\_

\_\_\_ Major



\_\_\_\_\_

\_\_\_ Major

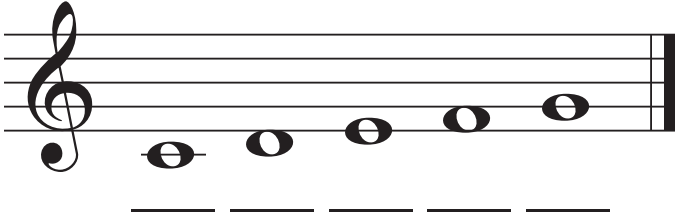


\_\_\_\_\_

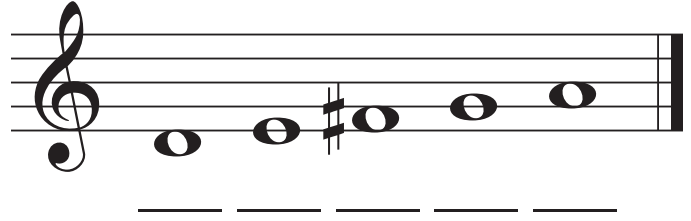
# PIANO ADVENTURES® – SCALE AND CHORD BOOK 1

(Major 5-Finger Scales: Identifying on the Treble Staff)

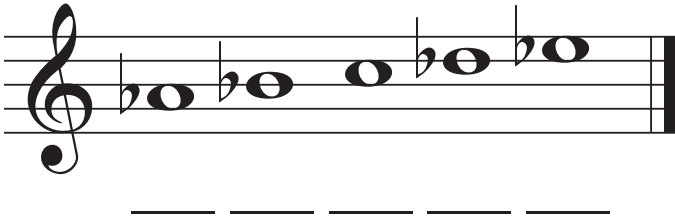
\_\_\_ Major



\_\_\_ Major



\_\_\_ Major



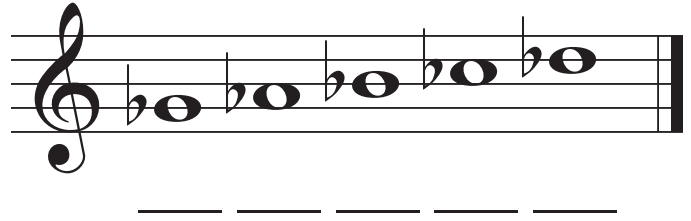
\_\_\_ Major



\_\_\_ Major



\_\_\_ Major



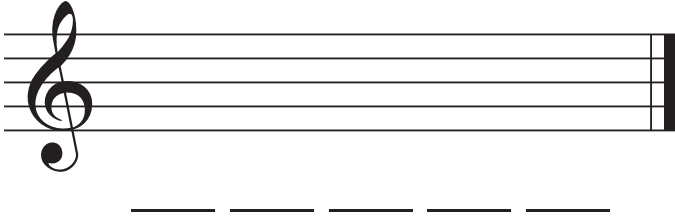
\_\_\_ Major



# Major 5-Finger Scales: Writing on the Treble Staff

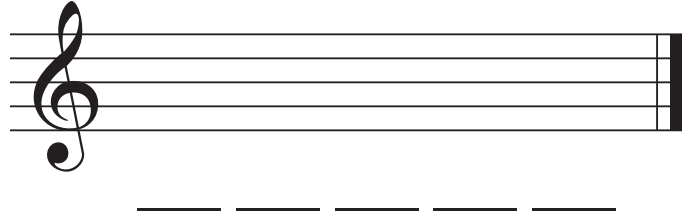
- Write the 5-finger scale shown for each staff. Use whole notes.
- Write the letter names in the blanks. Include any # or ♭.

**G Major**



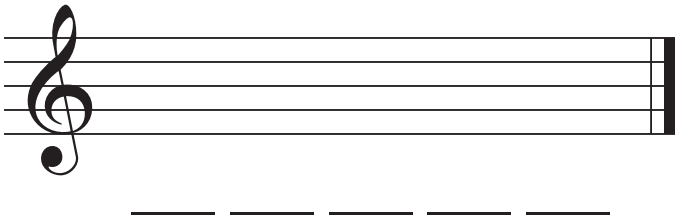
A musical staff with a treble clef and a single G note on the first line. Below the staff is a dashed line for writing the scale.

**A Major**



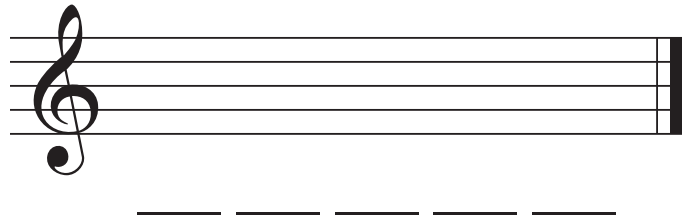
A musical staff with a treble clef and a single A note on the second line. Below the staff is a dashed line for writing the scale.

**F Major**



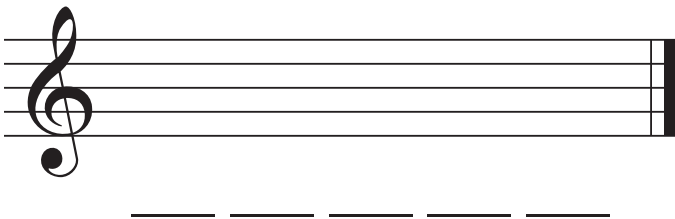
A musical staff with a treble clef and a single F note on the first space. Below the staff is a dashed line for writing the scale.

**D Major**



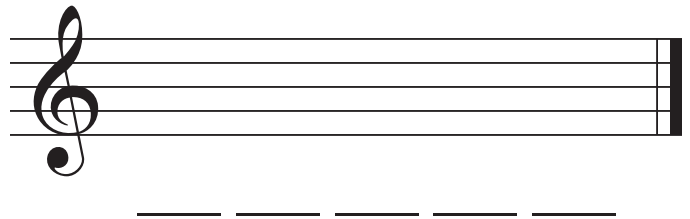
A musical staff with a treble clef and a single D note on the second space. Below the staff is a dashed line for writing the scale.

**A<sup>♭</sup> Major**



A musical staff with a treble clef and a single A<sup>♭</sup> note on the first space. Below the staff is a dashed line for writing the scale.

**D<sup>♭</sup> Major**

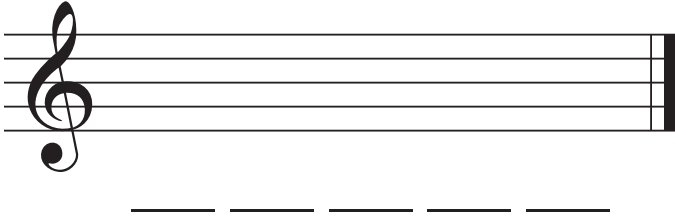


A musical staff with a treble clef and a single D<sup>♭</sup> note on the second space. Below the staff is a dashed line for writing the scale.

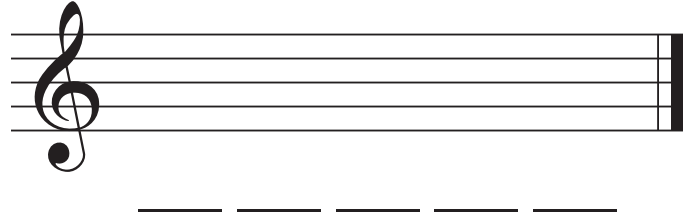
**PIANO ADVENTURES® – SCALE AND CHORD BOOK 1**

(Major 5-Finger Scales: Writing on the Treble Staff)

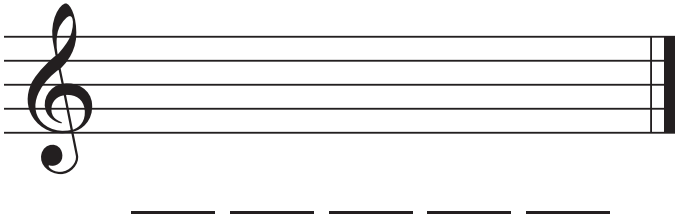
**E Major**



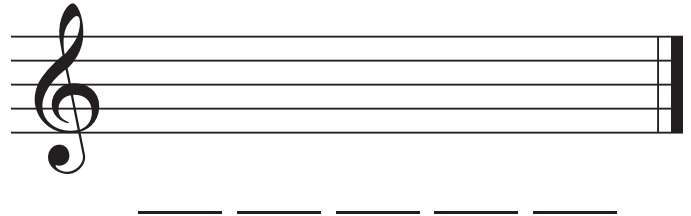
**E $\flat$  Major**



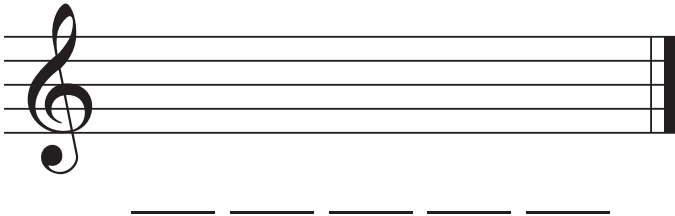
**C Major**



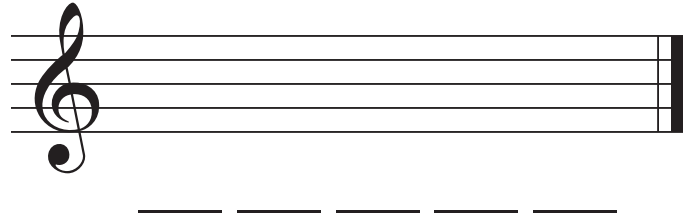
**B $\flat$  Major**



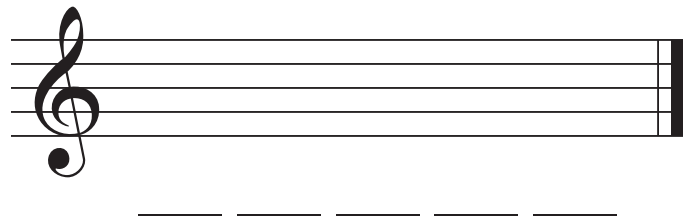
**B Major**



**G $\flat$  Major**



**F $\sharp$  Major**





# Questions and Answers with Major 5-Finger Scales

A **musical question** sounds incomplete. It can end on *any* note except the tonic (step 1).

A **musical answer** completes the conversation. It always ends on the tonic.

A *parallel* answer begins the same way as the question, and then changes.

A *contrasting* answer begins in a different way than the question.

- Write either *parallel* or *contrasting* answers.

## C Major

QUESTION

ANSWER

## G Major

QUESTION

ANSWER

# PIANO ADVENTURES® – SCALE AND CHORD BOOK 1

(Questions and Answers with Major 5-Finger Scales)

## D Major QUESTION

Musical notation for the D Major scale question in 4/4 time. The scale is written on a treble clef staff. The notes are D4, E4, F#4, G4, A4, B4, C#5, D5. The first four notes (D, E, F#, G) are grouped with a slur and a fingering of 1. The next two notes (A, B) are grouped with a slur and a fingering of 3. The last three notes (C#, D) are grouped with a slur and a fingering of 5. The final note (D) is marked with a fingering of 1. The dynamic marking is *mf*.

## ANSWER

An empty treble clef staff with a four-measure bar line, intended for the student to write the answer to the D Major scale question.

## A Major QUESTION

Musical notation for the A Major scale question in 3/4 time. The scale is written on a treble clef staff. The notes are A3, B3, C#4, D4, E4, F#4, G4, A4. The first two notes (A, B) are grouped with a slur and a fingering of 1. The next two notes (C#, D) are grouped with a slur and a fingering of 2. The final note (A) is marked with a fingering of 2. The dynamic marking is *mp*.

## ANSWER

An empty treble clef staff with a four-measure bar line, intended for the student to write the answer to the A Major scale question.

## E Major QUESTION

Musical notation for the E Major scale question in 2/4 time. The scale is written on a treble clef staff. The notes are E4, F#4, G#4, A4, B4, C#5, E5. The first four notes (E, F#, G#, A) are grouped with a slur and a fingering of 1. The final note (E) is marked with a fingering of 1. The dynamic marking is *mp*.

## ANSWER

An empty treble clef staff with a four-measure bar line, intended for the student to write the answer to the E Major scale question.

# PIANO ADVENTURES® – SCALE AND CHORD BOOK 1

(Questions and Answers with Major 5-Finger Scales)

## B Major

QUESTION

ANSWER

Musical notation for B Major in 4/4 time. The question part consists of a quarter note B4 (finger 1), a quarter note C#5 (finger 2), and a quarter note D5 (finger 3). The answer part is a half-note scale starting on B4, ascending to G#5 (finger 5) and then descending back to B4. The dynamic marking is *mf*.

## F Major

QUESTION

Musical notation for F Major in 4/4 time. The question part consists of quarter notes: F4 (finger 1), G4 (finger 3), A4, Bb4, C5, D5, E5, F5, G5, A5, Bb5, C6, Bb5, A5, G5, F5. The dynamic marking is *mf*.

ANSWER

An empty musical staff in treble clef, 4/4 time, intended for the student to write the answer to the F Major scale question.

## Bb Major

QUESTION

Musical notation for Bb Major in 3/4 time. The question part consists of quarter notes: Bb4 (finger 1), C5, D5, Eb5 (finger 5), F5, G5, Ab5 (finger 2), Bb5, C6, Bb5, Ab5, G5, F5, Eb5 (finger 3). The dynamic marking is *mp*.

ANSWER

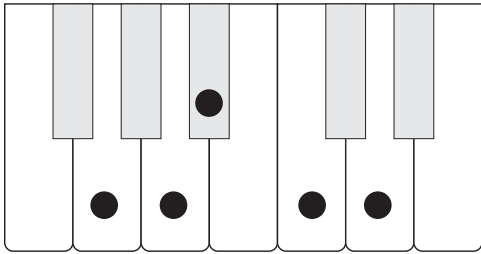
An empty musical staff in treble clef, 3/4 time, intended for the student to write the answer to the Bb Major scale question.



# Minor 5-Finger Scales: Identifying Keyboard Diagrams

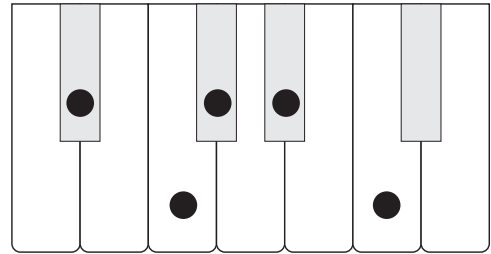
- Name each minor 5-finger scale on the keyboard given.
- Write the letter names below. Include any # or ♭.

\_\_\_ Minor



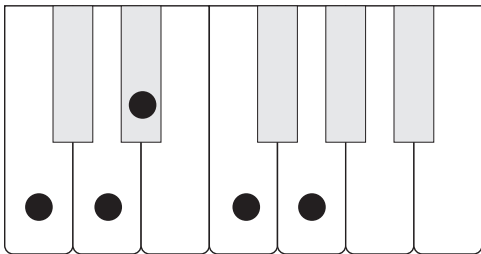
— — — — —

\_\_\_ Minor



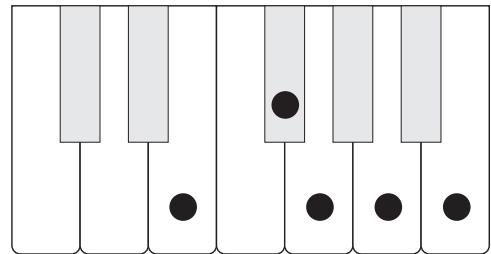
— — — — —

\_\_\_ Minor



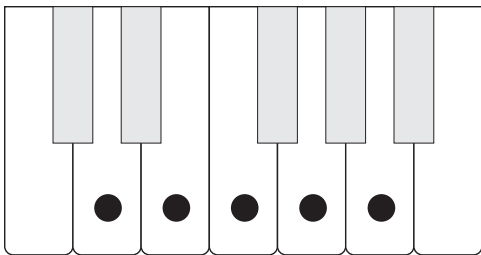
— — — — —

\_\_\_ Minor



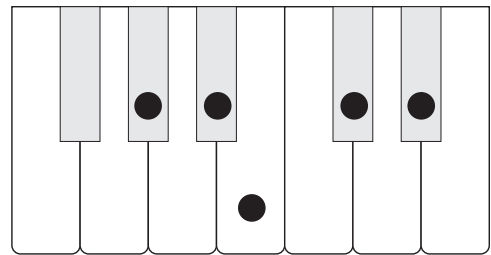
— — — — —

\_\_\_ Minor



— — — — —

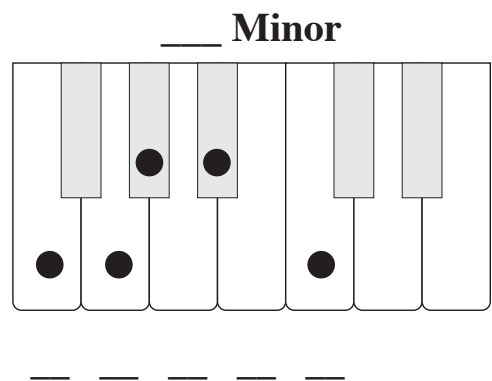
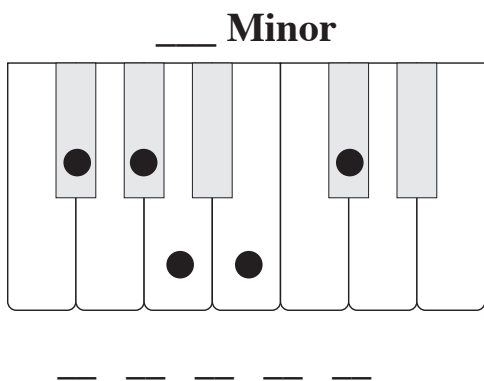
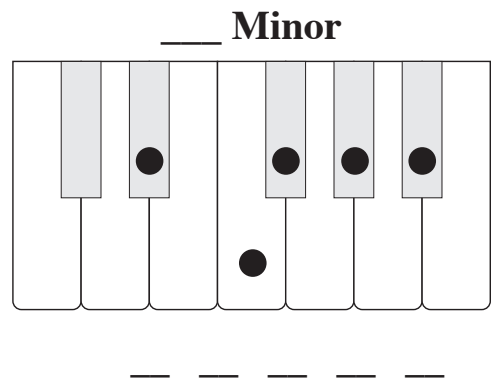
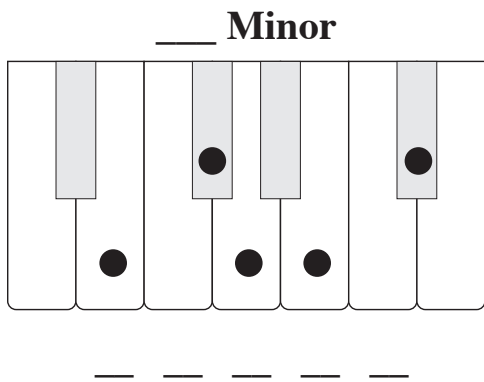
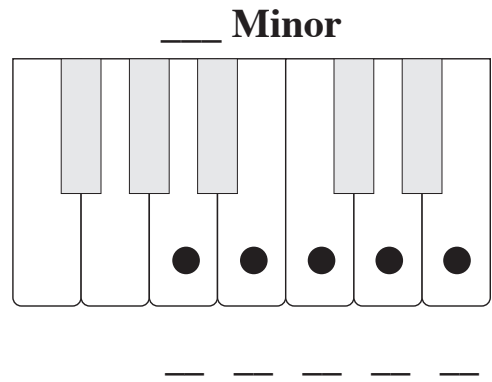
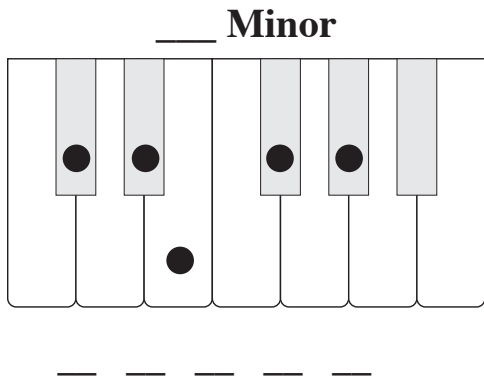
\_\_\_ Minor



— — — — —

# PIANO ADVENTURES® – SCALE AND CHORD BOOK 1

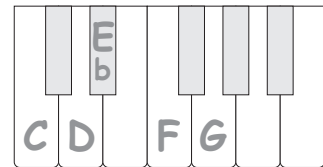
## (Minor 5-Finger Scales: Identifying Keyboard Diagrams)



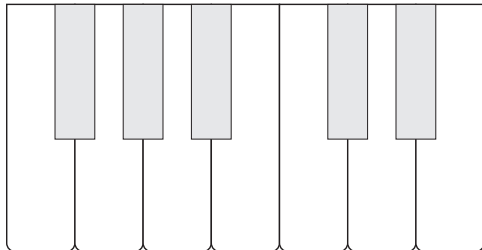
# Minor 5-Finger Scales: Labeling Keyboard Diagrams

- Write the letter names on the keyboard for each 5-finger scale.

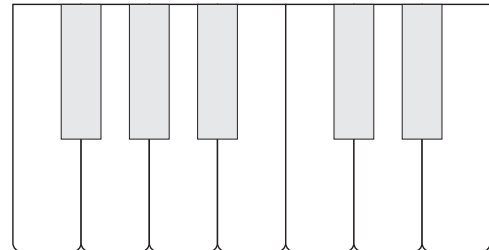
Ex. C Minor



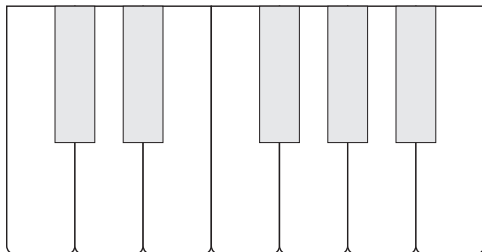
**A Minor**



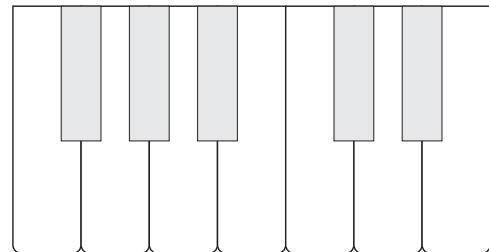
**F Minor**



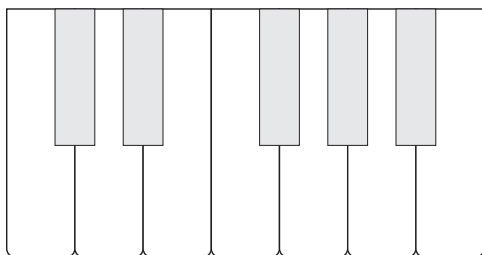
**E♭ Minor**



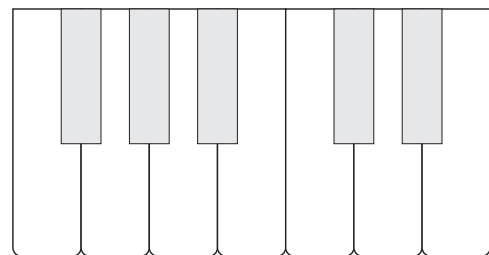
**G Minor**



**D Minor**



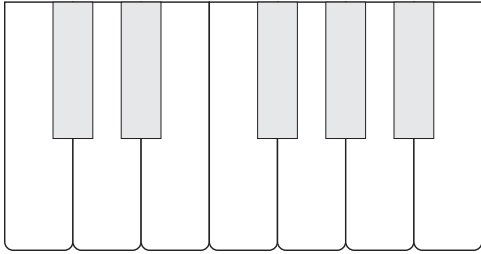
**G# Minor**



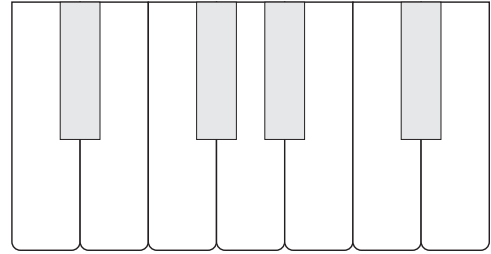
# PIANO ADVENTURES® – SCALE AND CHORD BOOK 1

## (Minor 5-Finger Scales: Labeling Keyboard Diagrams)

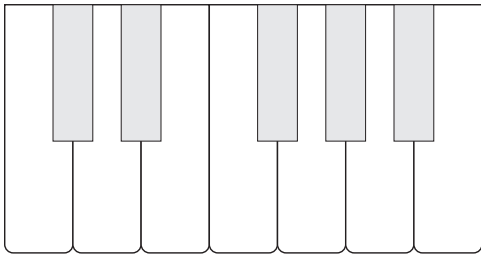
### C Minor



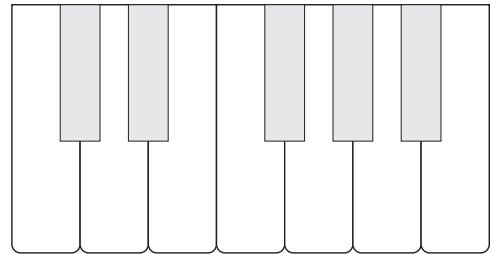
### B $\flat$ Minor



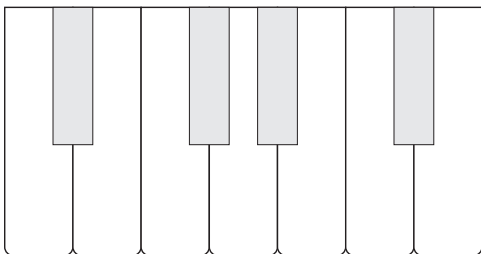
### C $\sharp$ Minor



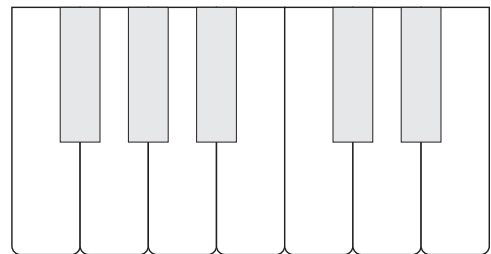
### E Minor



### B Minor



### F $\sharp$ Minor





# Minor 5-Finger Scales: Identifying on the Treble Staff

- Name the 5-finger scale shown on each staff.
- Write the letter names in the blanks. Include any # or ♭.

\_\_\_ Minor



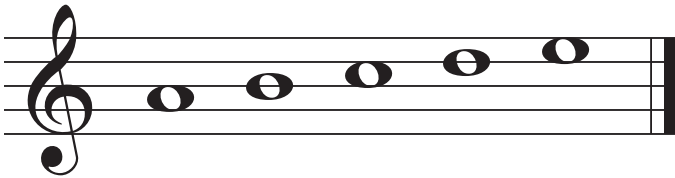
\_\_\_\_\_

\_\_\_ Minor



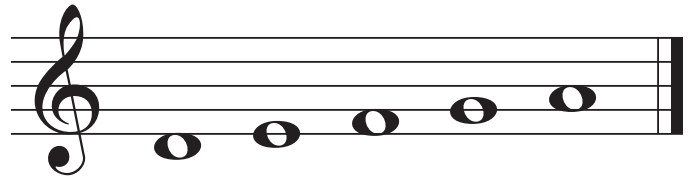
\_\_\_\_\_

\_\_\_ Minor



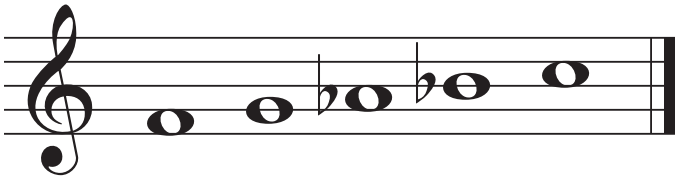
\_\_\_\_\_

\_\_\_ Minor



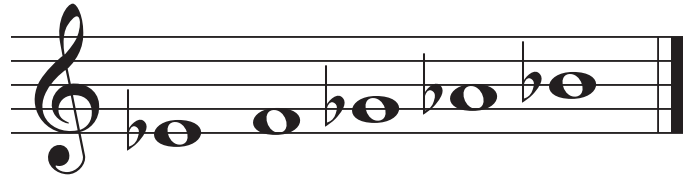
\_\_\_\_\_

\_\_\_ Minor



\_\_\_\_\_

\_\_\_ Minor

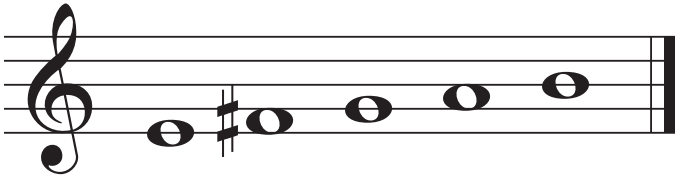


\_\_\_\_\_

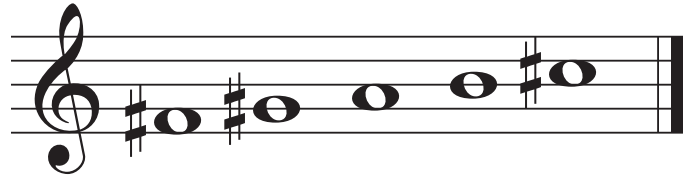
# PIANO ADVENTURES® – SCALE AND CHORD BOOK 1

## (Minor 5-Finger Scales: Identifying on the Treble Staff)

\_\_\_ Minor



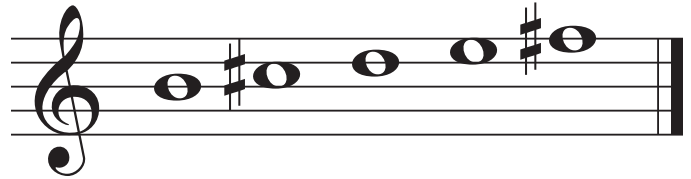
\_\_\_ Minor



\_\_\_ Minor



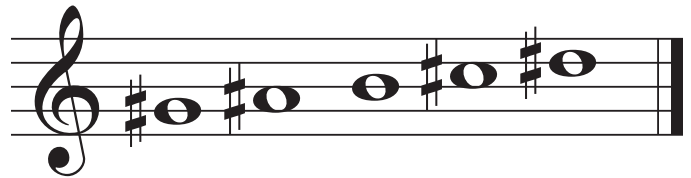
\_\_\_ Minor



\_\_\_ Minor



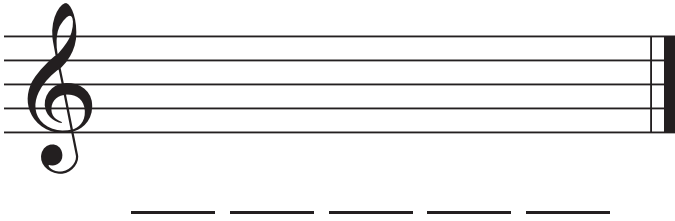
\_\_\_ Minor



# Minor 5-Finger Scales: Writing on the Treble Staff

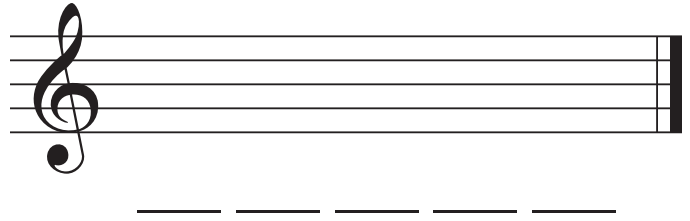
- Write the 5-finger scale shown for each staff. Use whole notes.
- Write the letter names in the blanks. Include any # or ♭.

**E Minor**



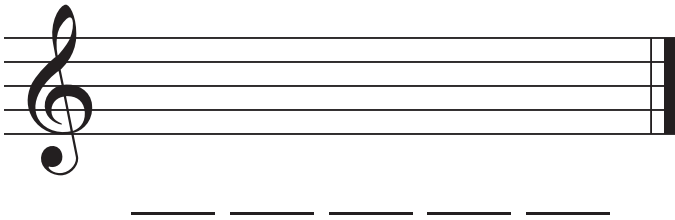
A treble clef staff with a single whole note on the bottom line (E4). Below the staff is a dashed line for writing the scale.

**G Minor**



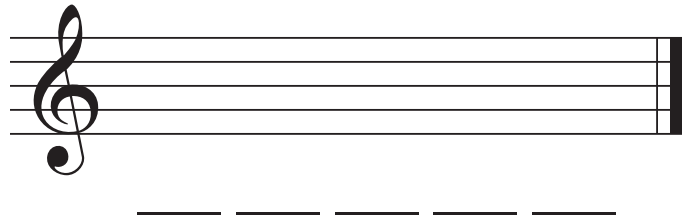
A treble clef staff with a single whole note on the second line (G4). Below the staff is a dashed line for writing the scale.

**B Minor**



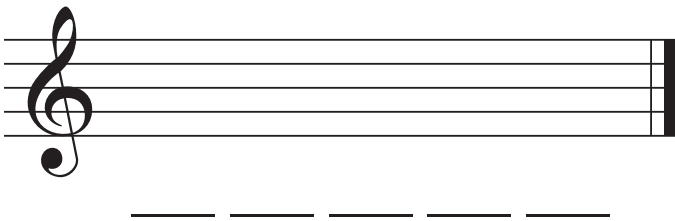
A treble clef staff with a single whole note on the third space (B4). Below the staff is a dashed line for writing the scale.

**F Minor**



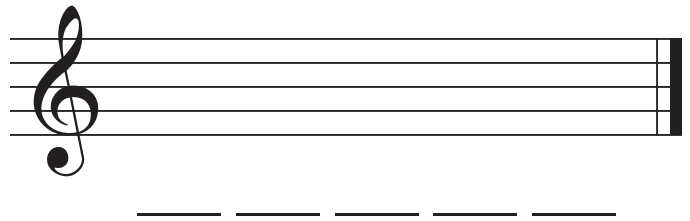
A treble clef staff with a single whole note on the first space (F4). Below the staff is a dashed line for writing the scale.

**F# Minor**



A treble clef staff with a single whole note on the first space (F#4). Below the staff is a dashed line for writing the scale.

**C Minor**

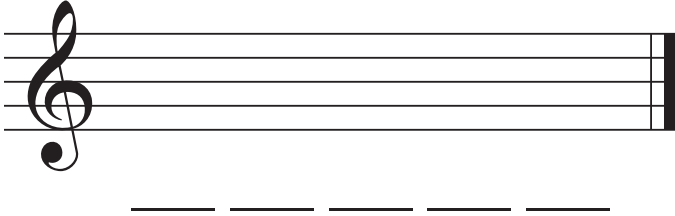


A treble clef staff with a single whole note on the middle C (C4). Below the staff is a dashed line for writing the scale.

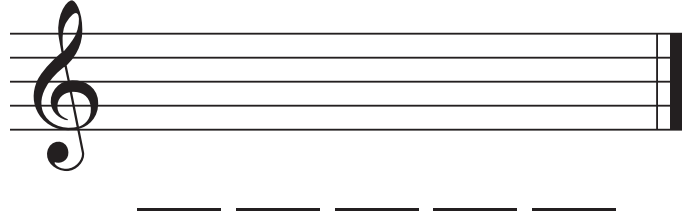
**PIANO ADVENTURES® – SCALE AND CHORD BOOK 1**

(Minor 5-Finger Scales: Writing on the Treble Staff)

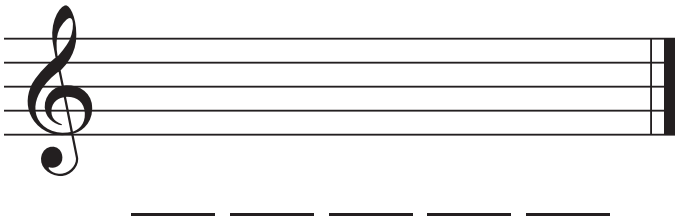
**G# Minor**



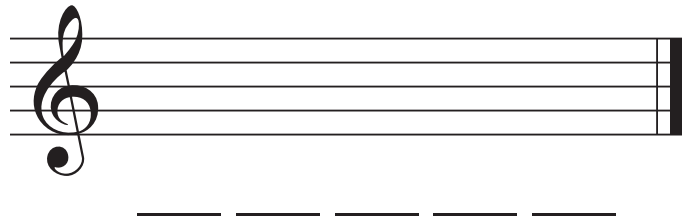
**D Minor**



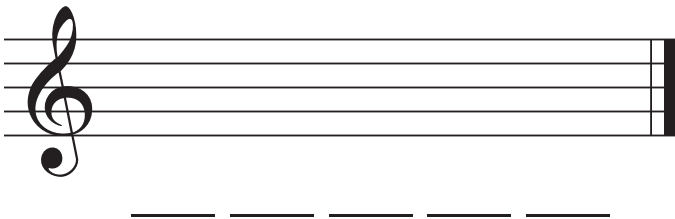
**A Minor**



**C# Minor**



**Bb Minor**



**Eb Minor**

