

# March on D-E-F

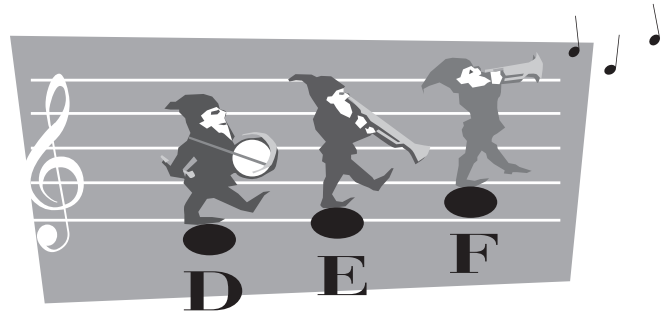
PRIMER LESSON BOOK, page 42

by Nancy and Randall Faber

**FABER**  
PIANO ADVENTURES  
**ENSEMBLE**

## How to Start the Piece

Almost every piece has a *two-measure* introduction played by PART 2 in the low range of the piano. Occasionally, the ensemble does a group count-off. The introduction provides a satisfying musical opening for the piece. It also helps students establish good counting and listening skills.



## Choose Your Ensemble!

### OPTION 1

March on D-E-F **DUET**

- Part 1—Piano Mid Range
- Part 2—Piano Low Range

### OPTION 2

March on D-E-F **TRIO**

- Part 1—Piano Mid Range
- Part 2—Piano Low Range
- Part 3—Piano High Range

**OR** Part 4—Triangle or Drum

### OPTION 3

March on D-E-F **FULL ENSEMBLE**

- Part 1—Piano Mid Range
- Part 2—Piano Low Range
- Part 3—Piano High Range
- Part 4—Triangle or Drum

## Performance Bonus!

### March on D-E-F Story

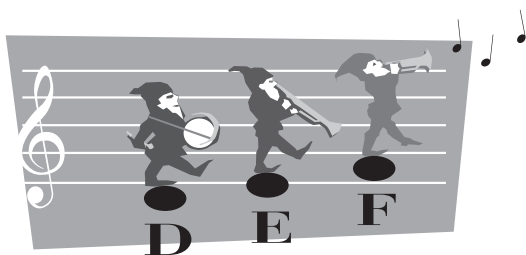
For Recital, Class, and Summer Camps  
by Crystal Bowman

Students may tell the story/poem to the audience before performing the piece. The story is divided into parts offering each student a speaking part.

# March on D-E-F

## PART 1

Piano Mid Range



**FABER**  
PIANO ADVENTURES  
ENSEMBLE

- PIANO 2 plays the Intro.
- Follow the notes and feel the beat. Then begin to play! (Words are included as a rhythm guide.)

INTRO: PIANO 2 plays two octaves LOWER than written.

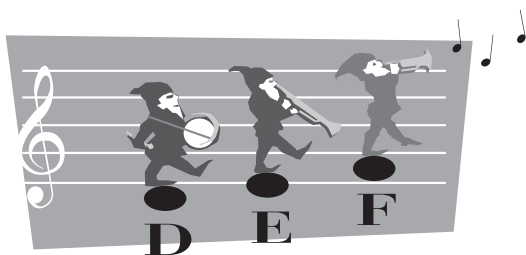
- Begin PART 1 in the MIDDLE of the piano. (This is the original music from the Lesson Book.)

Like a march

# March on D-E-F

## PART 2

Piano Low Range



**FABER**  
PIANO ADVENTURES  
**ENSEMBLE**

- PIANO 2, YOU set the beat by playing the Intro.
- Then continue with your part below. (Words are included as a rhythm guide.)

INTRO: PIANO 2 plays two octaves LOWER than written.

- Continue playing 2 octaves LOWER than written.

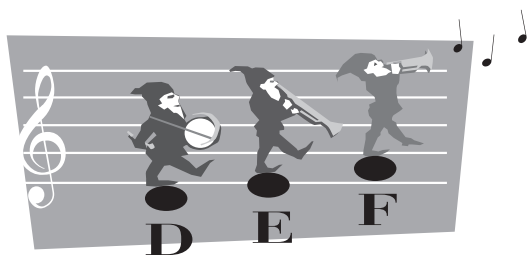
**Like a march**

5

# March on D-E-F

## PART 3

Piano High Range



**FABER**  
PIANO ADVENTURES  
ENSEMBLE

- PIANO 2 plays the Intro.
- Listen and follow the notes. Then begin to play! (Words are included as a rhythm guide.)

INTRO: PIANO 2 plays two octaves LOWER than written.

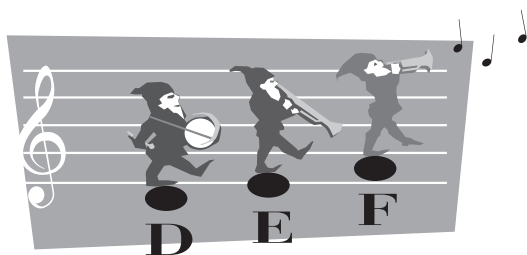
- Begin PART 3: Play 1 octave HIGHER than written.

5

# March on D-E-F

## PART 4

Triangle or Drum



**FABER**  
PIANO ADVENTURES  
ENSEMBLE

- PIANO 2 plays the Intro.
- Listen and follow the notes. Then strike the **triangle** or **drum** on the *circled* notes! (Counting included as a rhythm guide.)

INTRO: PIANO 2 plays two octaves LOWER than written.

- Begin TRIANGLE or DRUM playing the *circled* notes.

Like a march

5

## Ensemble Story

# March on D-E-F

by Crystal Bowman

**FABER**  
PIANO ADVENTURES  
**ENSEMBLE**

### **PART 1**

Three little elves wore purple, green, and red.  
The little elves' names were Frankie, Tod, and Fred.

### **PART 2**

Frankie played his drum on space note D.  
Tod played his horn keeping time on line E.

### **PART 3**

When Fred stepped to F, he liked that space.  
He played his trumpet louder as he picked up the pace.

### **PART 4**

The elves marched on the lines and in the spaces too.  
And now we'll play March on D-E-F for you!

**Note:** For a performance with only two or three players, assign multiple speaking parts.